

sikkens

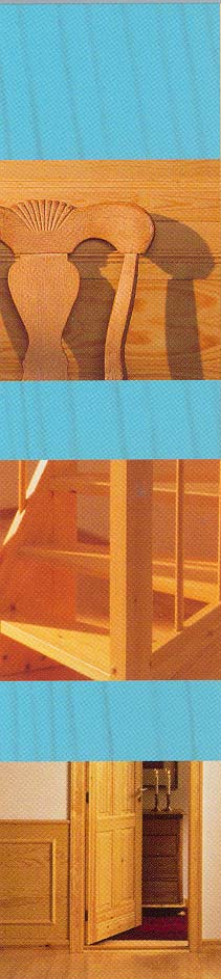
Cetol® Interior Stain

Cetol® BL Interior Clear



Simply Beautiful
WOOD CARE PRODUCTS

A System of Translucent
Waterborne Wiping Stain
and Premium Transparent
Wood Finish



Cetol® Interior Stain

Cetol® BL Interior Clear

Interior Surfaces

- Doors
- Windows
- Furniture
- Floors (residential)
- Trim
- Logs
- Sunrooms
- Molding
- Paneling
- Ceilings

Cetol Interior Stain

Cetol Interior Stain is an easy to use, low odor waterborne interior wiping stain available in 12 colors which can be used to make the décor of any home “Simply Beautiful.”

Cetol Interior Stain Performance Highlights

Feature	Benefits
Waterborne	Easy Clean-up / Low Odor
Quick Drying	Fast Application Process
Synthetic Pigments	Excellent Clarity

Cetol BL Interior Clear

Cetol BL Interior Clear is an acrylic fortified urethane formulation designed to offer a high performance clear finish in low lustre, satin or gloss for most interior wood surfaces. Cetol BL Interior Clear offers protection, durability, and easy application for both the do-it-yourselfer and the professional alike. *For an oil based finish use Cetol Interior Clear.*

Cetol BL Interior Clear Performance Highlights

Feature	Benefits
Quick Drying	Less Time Needed Between Coats
Urethane Enhanced	More Durable, Resists Scratches and Wear-and-Tear
Non-Yellowing	Long Lasting Clarity
Waterborne	Easy Clean-Up / Low Odor When Combined with Waterborne Stain, Finish and Stain Can be Completed in One Day

12 Natural Colors Available in Cetol Interior Stain



004 Natural Oak



078 Natural



074 Ipswich Pine



083 Fruitwood



085 Teak



072 Butternut



044 Cherry



010 Walnut



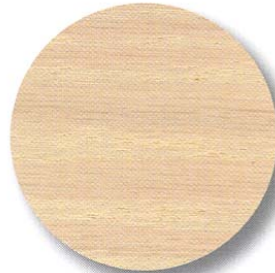
045 Mahogany



023 Burgundy

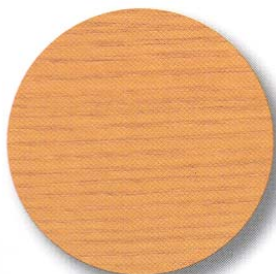


061 Hunter Green

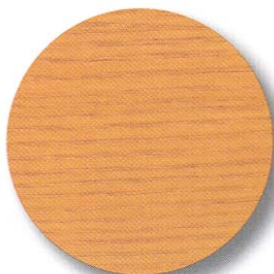


030 Opal White

3 Sheens Available in Cetol BL Interior Clear



Low Lustre



Satin



Gloss

Working With Cetol Interior Stain & Cetol BL Interior Clear

Preparation Procedures*New, Uncoated Wood*

1. Remove hardware. This will make the preparation faster and easier. Hardware that cannot be removed should be taped.
2. Clean the surface with a solution of 4 ounces of 100% powdered Tri-Sodium Phosphate (TSP) or phosphate-free substitute in one gallon of warm water. Do not allow cleaning solution to dry on surface. Use a damp cloth or sponge to remove residue from the surface and allow to dry.
3. Fill all holes and cracks with a good quality tinted or stained acrylic wood filler to match the color of the project. Let dry fully before sanding. Do not use oil based fillers, putties or wax sticks.
4. Sand the surface using 150-180 grit sandpaper. Always sand wood with the grain to achieve a smoother surface without sanding marks. Remove sanding dust by vacuuming, then wipe surface with a damp cloth to remove final dust particles.

Tips

- *It is always recommended to perform a color test on a sample of the wood.*
- *For a smoother final finish, or before using stain, use 180-220 grit sandpaper after step #4 above.*
- *Avoid direct sunshine that may cause uneven color because of shortened open time and poor penetration of the product.*

Application Procedures**New / Bare wood applications**

1. Follow the preparation procedures.

For clear finishes skip to step #6

2. Wipe Cetol Interior Stain in a circular motion with a damp rag
3. Wait 2 to 3 minutes before wiping off excess in direction of wood grain
4. Wait 2 hours for light colors, 4 hours for dark colors
5. Lightly sand with 220 grit sandpaper or a fine scuffing pad and remove the dust
6. Apply Cetol BL Interior Clear
7. Wait 4 to 6 hours
8. Lightly sand with 220 grit sandpaper or a fine scuffing pad and remove the dust
9. Apply Cetol BL Interior Clear
10. Clean tools with soap water

- *Cetol Interior Stain smooth wood coverage: 600sq.ft./US gallon*
- *Cetol BL Interior Clear smooth wood coverage: 400-500sq.ft./US gallon*
- *Cetol Interior Clear smooth wood coverage: 400-500sq.ft./US gallon*
- *For more color depth a 2nd coat of Cetol Interior Stain may be applied prior to the finish*
- *For high wear areas apply a 3rd coat of Cetol BL Interior Clear after 4 hours of dry time*
- *Apply 4 coats of Cetol BL Interior Clear for use on lower wear residential type floors.*

Maintenance Procedures

The longevity of the coating system depends on many factors such as daily wear-and-tear, and exposure to ultraviolet light. Simply apply a refresher coat when required by following the procedure below.

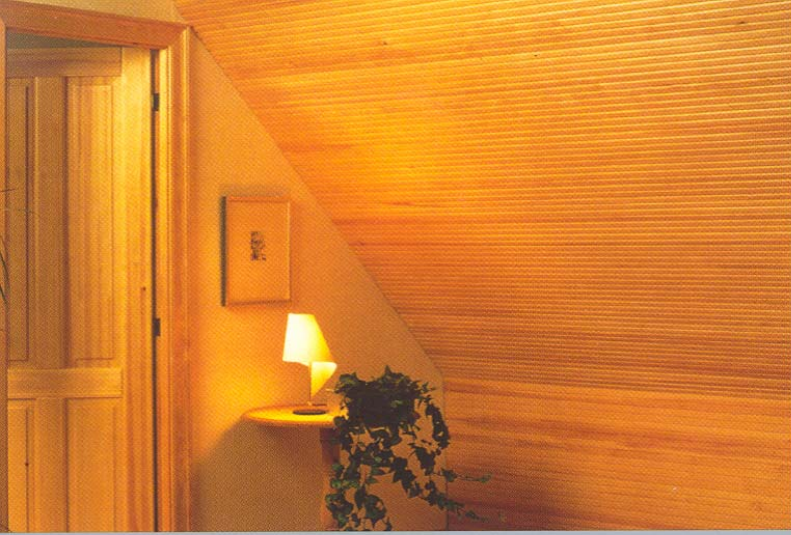
1. Follow preparation procedure steps 1 and 2 above, reducing the cleaning solution to 2 ounces of 100% powdered Tri-Sodium Phosphate or phosphate-free substitute.
2. Sand the project surface with 220 grit sandpaper. Before coating vacuum all remaining dust and use a damp cloth to wipe the surface.
3. Apply one to two coats of Cetol BL Interior Clear depending on the extent of the wear.

Application Do's...

- *Apply when the surface and air temp is 50°F/10°C to 95°F/35°C*
- *Gently stir the product before application, shaking can cause bubbles in the finish.*
- *Apply an even coat of Cetol Interior Stain with a damp cloth.*
- *Apply an even coat of Cetol BL Interior Clear using a synthetic nylon-polyester brush.*
- *Apply in a well ventilated area.*
- *Apply in the direction of the wood grain.*

Application Don'ts...

- *Do not apply on kitchen tables or kitchen cabinets.*
- *Do not apply if humidity is above 80% High humidity could cause hazing.*
- *Do not apply over other coatings.*
- *Apply Cetol Interior Stain to bare wood only.*
- *Do not apply in areas of high humidity such as bathrooms or pool rooms.*
- *Do not use steel wool for sanding*



Cetol® Interior Stain Cetol® BL Interior Clear

Cetol Interior Stain and Cetol BL Interior Clear offer a combination of superior performance, ease of use, low odor and beauty in a waterborne interior finishing system. Sikkens "Simply Beautiful" wood care products are known throughout the industry as offering unrivaled looks, durability and performance for all types of wood. These products have been specially formulated for a variety of interior wood surfaces.



Simply Beautiful[™]